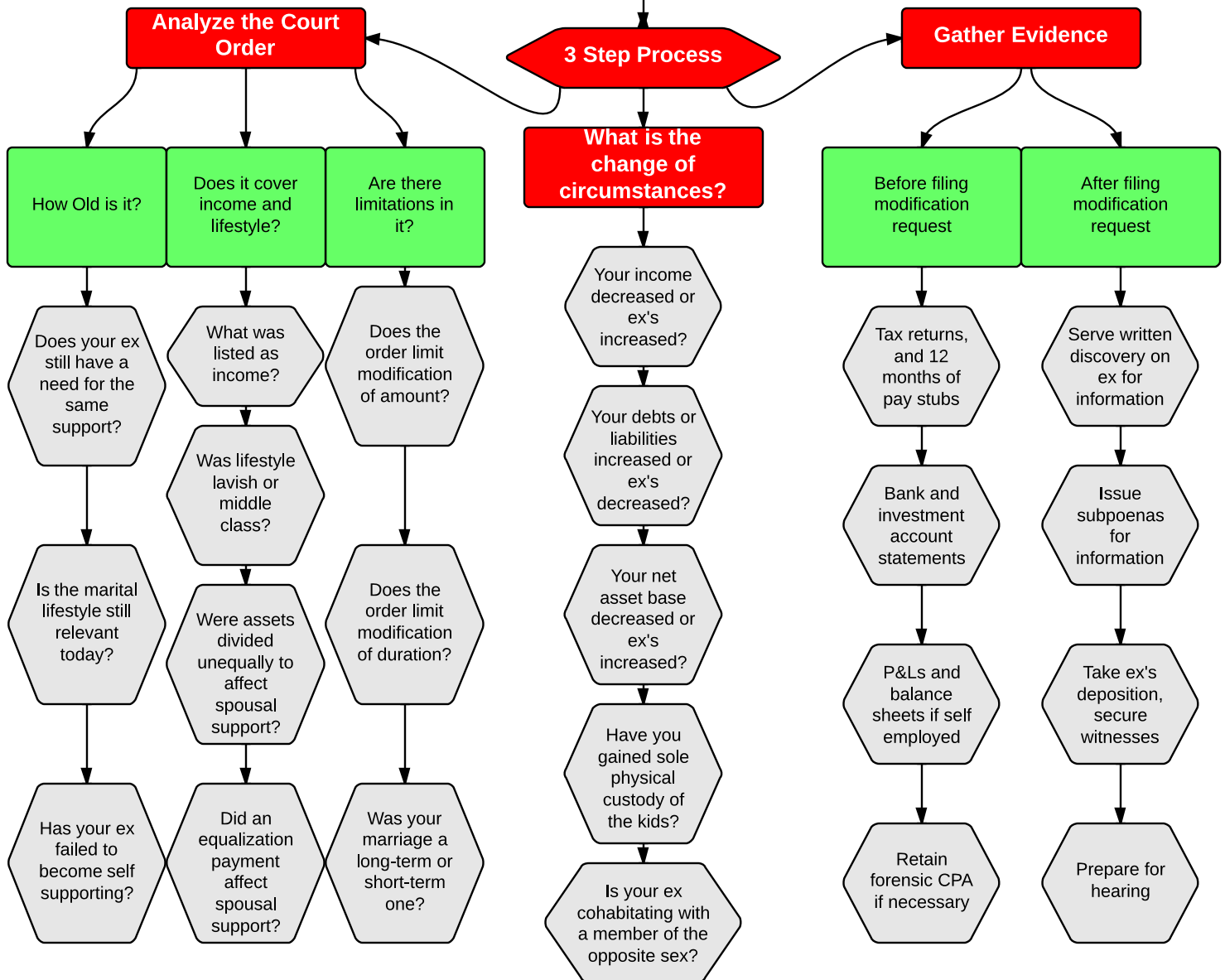


How Do You Reduce Spousal Support in California?



Flow chart by Farzad Family Law, APC. You may share this with others but please do not take credit for our work and do not alter it. Flow chart is the intellectual property of Farzad Family Law, APC, 1851 East 1st Street, Suite 1150, Santa Ana, California 92705. The chart is for general reading only, intended for California residents and is not intended as legal advice. Do not rely on it for any particular set of facts or case. You can learn more about our family law firm at farzadlaw.com or visit us by clicking on our logo, below.